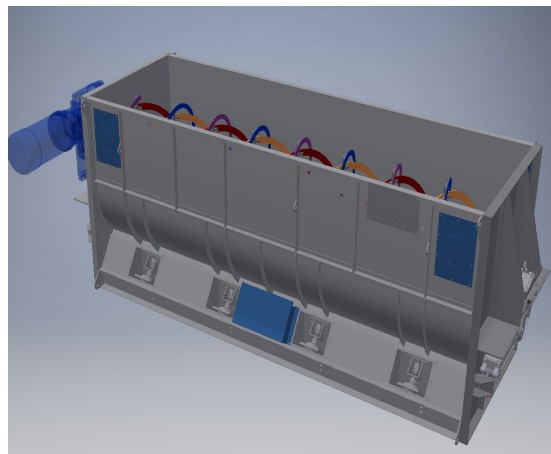
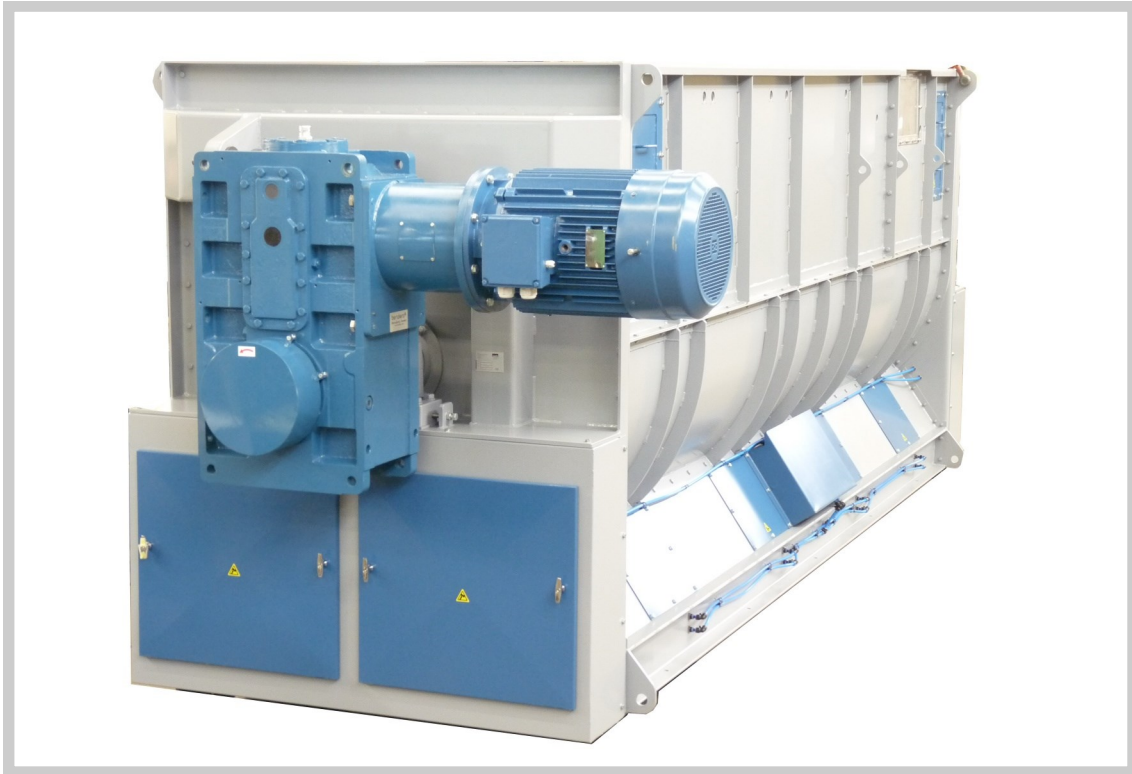


Ribbon mixer with bomb door

Type: LMK



Application

The horizontal ribbon mixer is designed for the rapid, homogeneous mixing of dry-meal products, and in particular, the accurate mixing of small quantities of additive.

Operation

The horizontal ribbon mixer also operates fully automatically when a charging hopper is connected to the top and a receiving hopper to the bottom of the mixer. With this arrangement, up to 10 batches an hour can be processed. A single batch can be thoroughly mixed in about 4 minutes due to the incorporation of a specially-designed ribbon-type agitator.

Construction

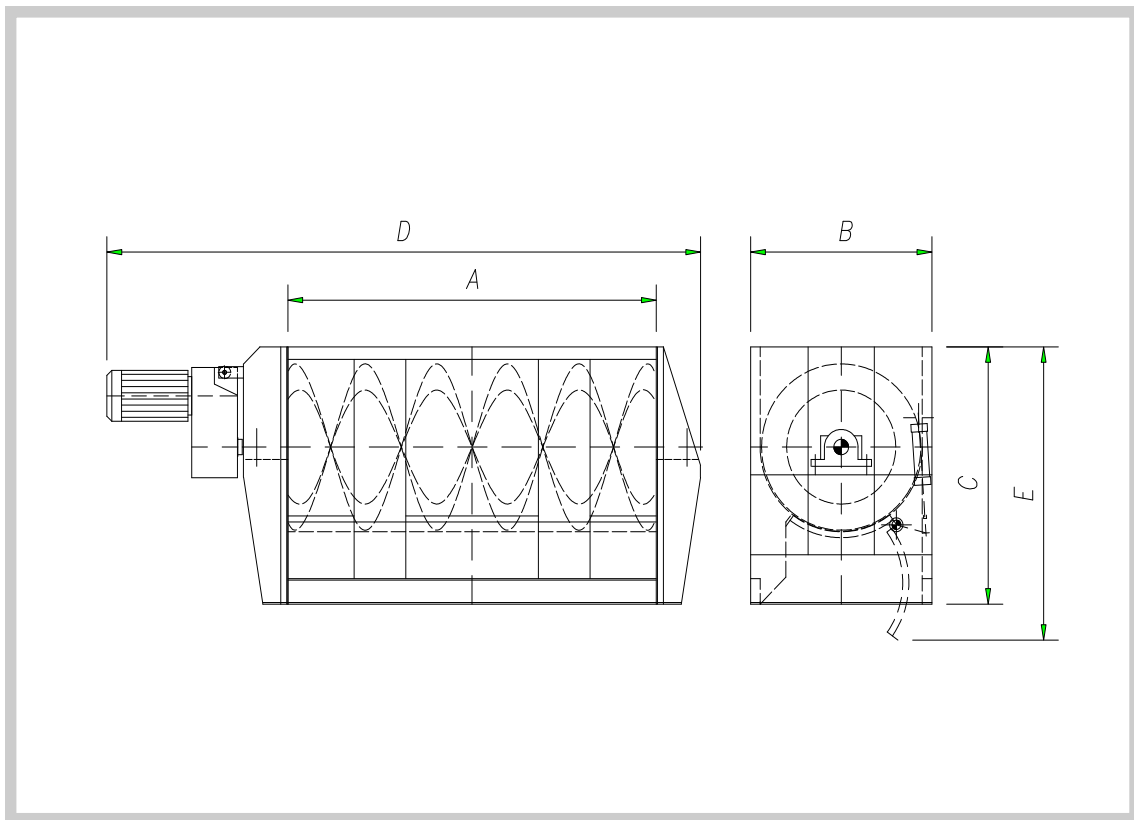
- Strong, attractively-styled housing with large inspection doors.
- The two ribbons are welded to steel arms fitted to the main shaft.
- The rotor shaft is supported by selfaligning ball bearings.
- Discharge is controlled by a motorised or pneumatically-operated bomb door.

Optional extras

- Injection nozzles for max. 5% liquids.
- Limit switches on the inspection doors.

Ribbon mixer with bomb door

Type: LMK



Type	Capacity liter	A	B	C	D	E	Motor KW	Weight kg
LMK-01	1000	2000	1000	1470	3000	1820	4	1100
LMK-02	2000	2500	1230	1670	3880	2020	7,5	2300
LMK-04	4000	3000	1530	2000	4370	2150	18,5	3200
LMK-06	6000	4500	1530	2000	5250	2150	30	5000
LMK-08	8000	4200	1750	2200	5600	2550	37	6700
LMK-10	10.000	5250	1750	2200	6650	2550	45	8000
LMK-12	12.000	6000	2050	2450	7450	2800	55	9600